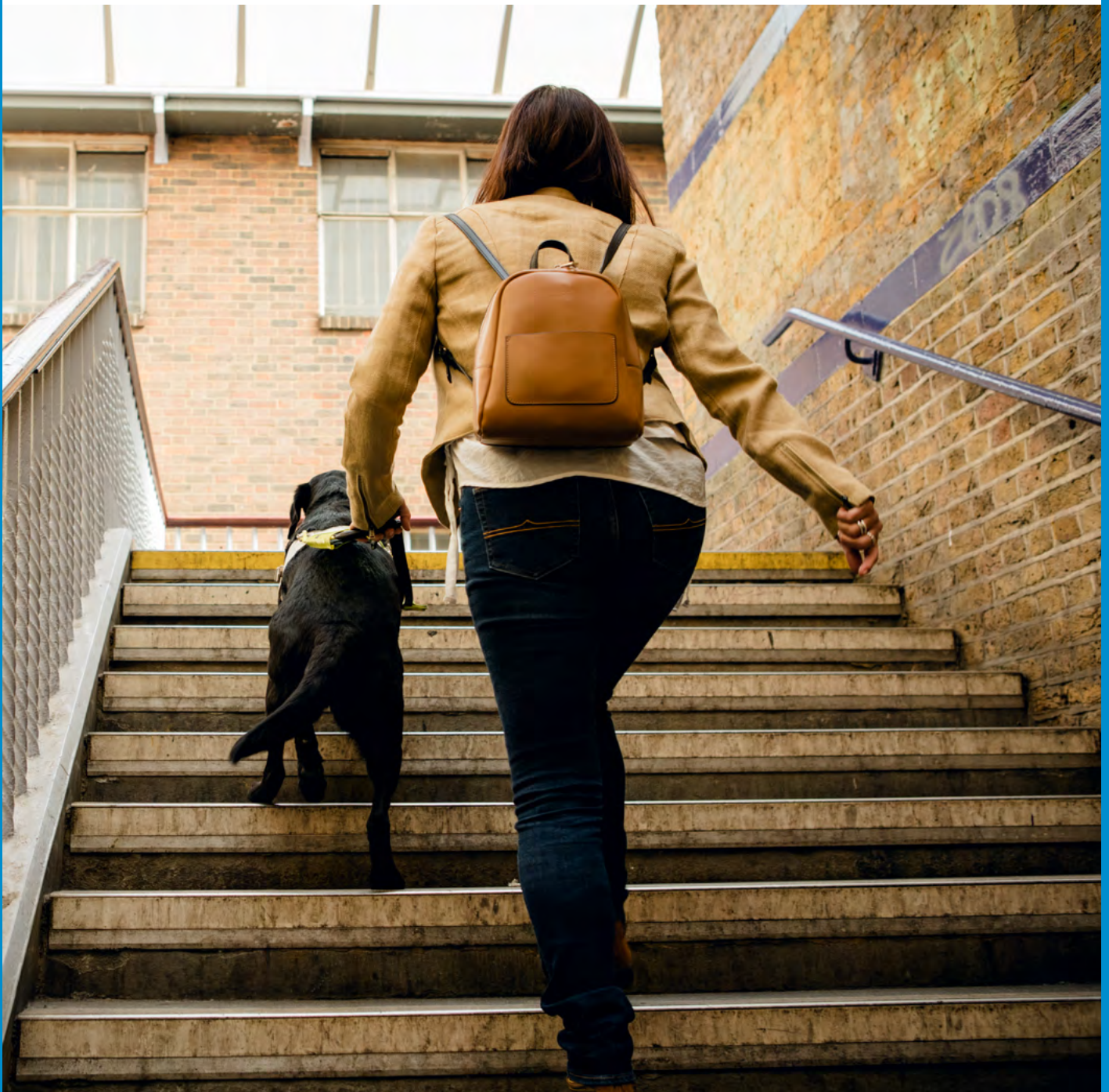


Module 1

What does a guide dog do?



Lesson plan

UK Curriculum links

English, Citizenship, The world around us, Geography

Aim:

To explain how a guide dog responds and reacts in some everyday situations.

Objectives:

- To assess how much children know about what a guide dog does.
- To use activities and videos to understand what a guide dog does and have some idea of the complexity of the training involved and why it is so important.

Learning Outcomes:

Most children will be able to describe a few things that a guide dog is trained to do. Some children will be able to follow a map and direct a guide dog successfully along a route between 2 points. Some will be able to show empathy by imagining a typical morning or afternoon in the life of a guide dog.

Teacher/ Leader Notes:

There are various videos available on our You Tube Channel Guide Dogs UK, the link to the video 'Alma, Walk My Way' is on the learning resources pages of the Guide Dogs website.

Resources:

You will need access to the internet for the You Tube Videos and a screen with audio.

Resource sheet – What does a guide dog do?

Resource sheet - Plan of a town

Key Vocabulary:

Guide dog, crossing kerb, obstacles, corner, brave, confident

Introduction

NB The following gives a quick overview to explain what a guide dog does. Keep this information in mind when watching the video with your class.

What does a guide dog do?

A guide dog enables its blind or partially-sighted owner to get around safely and independently. It guides its owner in a straight line, unless told otherwise, avoiding obstacles – including those at the owner's head height. It will stop at kerbs and steps and find doors, crossings and places that are visited regularly. It will guide its owner across the road, but it is the owner who decides where and when to cross safely.

Watch the video 'Alma, Walk my way' using the link to You Tube on the Guide Dogs Learning resources pages. This video shows a journey taken by Nicky and Alma, a guide dog partnership. It lasts just over 5 minutes and there are some lovely examples of the dog stopping at steps, and waiting at crossings. Watch the video together. After watching the video use the following prompt questions to make a list of the different ways that Alma has helped Nicky:

- What does Alma do when she comes to a corner?
- What does she do when she comes to a kerb?
- What does she do when she comes to steps/stairs?
- What does Alma do when there are people around?
- Did anybody spot any obstacles? They may have noticed A-boards outside shops, bikes propped against shop windows etc.
- What has Alma the guide dog had to avoid?
- Where do Alma and Nicky end up?

Worksheet Activity

What does a guide dog do? – resource sheet

Paired Activity:

Give each pair a resource sheet which has a series of questions about guide dogs, explain that guide dogs are very carefully trained. This activity will help teach children about the role of the guide dog and show typical activities they have to be able to do. Read the statements together and discuss which option is correct. Ask children if they can give reasons for their answers. Continue until completed.

Activity Idea 1

Ask children to imagine they are Alma the guide dog.

Think about where they go with Nicky. Can they describe their journey or just a part of it simply. More able children will write in paragraphs and should be encouraged to use descriptive language.

Activity Idea 2

Plan of a town

Depending on ability children may work independently or with a partner on Resource sheet – plan of a town (the sheet shows a simple plan of a small town). There is a picture of a guide dog and its owner at the top left hand corner, starting at home. Children should decide first of all whether they are going to the school, cafe, library or the shop. They should use different coloured pencils and choose two routes. They should mark the places where the guide dog stops with an 'X'.

Activity Idea 3

Programmable Robots

Paired activity:

If you have programmable robots, either floor or table top. Extend the plan idea and ask children to work with a partner to develop a simple route either on the floor or on the top of desks to guide the 'guide dog' robot around. As well as reinforcing learning about the role of a guide dog it will also develop directional language and control as well as simple programming skills

Plenary

Guide Dog Profile

Build up a class profile of what a guide dog does together. Ask individuals/ volunteers to think about facts or qualities and write them down.

If you have used a floor or desk robot discuss how the activity worked, what went well, what was more difficult.

Home Activity

Recap

Recap on the role of the guide dog. Discuss the type of qualities that a guide dog should have, giving reasons why they are so important.