

Forward



“Mabel has given Caitlin a new purpose”

Buddy dog Mabel helps teenager Caitlin with her mental health

Inside: how to contact Guide
Dogs for help and when

Our Academy celebrates
a milestone graduation

Find out what's inside our
brilliant new Puppy Packs!



ROYAL CANIN®

BRINGING OUT THE BEST IN EVERY GUIDE DOG

Proud to be in
partnership with



**Guide
Dogs**



To find out more about our purpose, partners and products
please visit royalcanin.com

Contents

Regulars

- 5. Welcome from the CEO
- 6. News
- 13. Guide Dogs in the Media
- 15. On the Campaign Trail
- 18. Star News
- 19. A Day in the Life Of... Nicky Schwarz,
Sighted Guide Training Officer
- 24. Thank You to our Supporters
- 26. New Partnerships
- 34. Letter & Caption Competition
- 35. In Good Company



◀ Page 6. Guide Dogs' Patron, Her Royal Highness The Duchess of Edinburgh



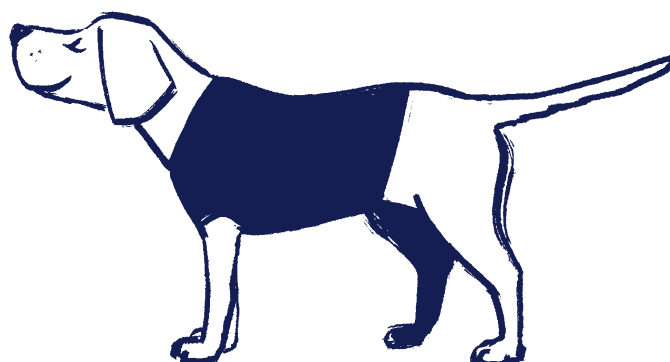
▶ Page 18. Reece Clarke, Principal Dancer of The Royal Ballet

Features

- 10. Guide Dogs Puppy Packs are here!
- 12. Need help?
Here's who to call and when
- 14. Academy celebrates its
50th graduate!
- 16. Visiting unique places to build
lifelong skills
- 20. Caitlin and Mabel's story
- 22. Steven goes round the houses
to name a guide dog puppy
- 23. Helen leaves a life-changing
gift to Guide Dogs



◀ Page 20. Caitlin with her family and Mabel





Could you be an event volunteer?



Sometimes it's the little things that make events, such as the London Marathon or Great North Run, shine for those raising money for us.

Event volunteer is a unique role that involves cheering, high fiving, waving flags, spreading smiles, and celebrating with our runners – your puppy in training could be the star of the day!

Taking part for just a few hours can help us to support people living with sight loss. Email eventvolunteers@guidedogs.org.uk for more information.

Subscription enquiries:

You're receiving this copy of Forward magazine as one of our valued supporters. Forward is available in standard print, Braille and large print formats. It's also available online as an accessible PDF, as a plain text document and as audio files at guidedogs.org.uk/forward.

If you no longer wish to receive this magazine, or if you wish to change the format in which it's sent to you, please contact us on 0800 953 0113 or email guidedogs@guidedogs.org.uk.

Editorial contributions:

Send your stories to Forward by email to forward@guidedogs.org.uk or addressed to 'Forward magazine' by post to the Head Office address below. Unfortunately, due to the volume of ideas we receive, we cannot acknowledge every item. We reserve the right to edit or refuse.

Founding editor:

The late Captain Nikolai Liakhoff MBE FRZS

Registered head office:

The Guide Dogs for the Blind Association, Hillfields, Burghfield Common, Reading RG7 3YG.

Switchboard: 0118 983 5555

Guide Line: 0800 781 1444 or information@guidedogs.org.uk

Supporter Experience: 0800 953 0113 or guidedogs@guidedogs.org.uk

Web: guidedogs.org.uk

© 2026 Registered charity in England and Wales (209617), Scotland (SC038979) and Isle of Man (1334). E013 04/26

Any products or services advertised in Forward by third parties are not in any way endorsed by Guide Dogs, and Guide Dogs shall not be responsible for the accuracy of any information contained in such advertisements nor has it investigated or verified any of the information.

A welcome from Andrew

What an amazing start to the year.

Perhaps that might feel like a bit of a bold statement with some of the wider world issues, but as we look to what is happening closer to home, there have been some incredible outcomes that all at Guide Dogs have been part of and that we want to share with you, our supporters.

As you read through this edition of Forward, you will get to learn of our success on a national stage with multiple policy changes that we had campaigned for over many years. You will also learn of innovation in our Puppy Development teams and a new Puppy Pack that we are introducing. We also have updates on our Guide Dogs Academy that trains the trainers of the future, and the story of a Royal visit to Northern Ireland.

Trying hard not to steal the thunder from the article on the Puppy Packs, suffice to say I took one of the new packs with me to a board meeting just before they launched; on the outside there is some branding welcoming the volunteer to being a puppy raiser, and sat on the train holding the box I was congratulated on my new pup by a passing traveller! That did make me smile.

Through the donations and volunteering support we are able to help so many from the youngest to the oldest, from the person with sight loss to the family and circle of support around them. It is wonderful that no matter what is happening in the wider world, charities continue to do amazing things and I continue to be very proud of the work of Guide Dogs.

I hope that you enjoy this edition of Forward.



Andrew Lennox

Chief Executive Officer
Guide Dogs



News

Our Patron visits Guide Dogs Northern Ireland

Guide Dogs' Patron, Her Royal Highness The Duchess of Edinburgh, visited Guide Dogs Northern Ireland in March to belatedly mark our 40th anniversary in Belfast. Her Royal Highness met staff, volunteers and guide dog owners whose lives have been shaped by four decades of Guide Dogs NI's work. The Duchess also surprised guide dog owner Judith Martin with a certificate to mark becoming the charity's 1,000th volunteer in Northern Ireland.

Guide dog training first began in Northern Ireland in 1984 at Lanesborough House in East Belfast. Since then, we've created more than 620 guide dog partnerships, and we now support more than 250 children, young people and families each year through a range of mobility and habilitation services.



Another campaigning win! Disability equality training for taxi drivers in England

Being turned away from shops, cafés and taxis because you're with your guide dog can be devastating. Despite being against the law, this discrimination happens too often, especially with taxis.

For over a decade, Guide Dogs has led the campaign for mandatory disability equality training for taxi and minicab drivers and operators. This training is vital to ensure drivers understand the law, respect the rights of assistance dog owners, and properly support disabled passengers.

In February, the Government confirmed that this training will become a legal requirement in England, following Northern Ireland's lead, and plans to introduce training in Wales. This is an important step towards finally ending access refusals for guide dog owners across the country.

We will keep up the pressure, campaigning for similar changes in Scotland, and call on licensing authorities to act against drivers who break the law.

AbleNet puts the pedal to the fundraising metal

AbleNet, a company which provides gift experiences for people with disabilities, is celebrating naming a guide dog puppy by doing more fundraising for Guide Dogs.

AbleNet has named an adorable black Labrador puppy Able after raising thousands through their annual Guide Dogs Charity Supercar Day. The event is aimed at guide dog owners and other people with sight loss, giving them the opportunity to get behind the wheel of some iconic performance cars including an Aston Martin DB9, Nissan GTR, Porsche 911 or a Ferrari F430.

The next Guide Dogs Charity Supercar Day is on Friday 11 September at Kendrew Barracks in Oakham, in the East Midlands. Visit ablenet.co.uk/ablenet-guide-dogs to find out more.



Paving the way for more powers to tackle pavement-parked cars

Guide Dogs has campaigned for stronger pavement parking laws for decades. Cars blocking pavements is a key issue affecting people with sight loss; our research found 95% have been forced to walk in the road because of pavement-parked cars.

We welcomed the Government's announcement in January promising local councils across England more powers to tackle pavement parking, in line with laws in Scotland and London. This will make streets safer for people with sight loss, and parking rules easier to understand for drivers. This also follows progress in Northern Ireland at the end of 2025, with the Northern Irish Government setting out plans to ticket pavement-parked cars.

We'll continue to work with governments across the UK to stop unsafe and unfair pavement parking.



Our work with football clubs really kicks off!

In February, six guide dog puppies took a trip to Chelsea Football Club's iconic Stamford Bridge Stadium for a memorable training experience. This new partnership, which involved the puppies doing an initial familiarisation session, is the latest in our work with football clubs.

Puppy Development Advisor Chloe Southby said: "These stadiums are unique in design and it's difficult to replicate that, so enabling our puppies to feel calm and confident is a huge benefit to them and their future owner.

"It's that positive first experience of visiting a football stadium that gives us the foundation to build on, eventually getting them ready to attend a match."

We're excited about what's next with Chelsea, as we continue to highlight the need for accessibility and inclusion within football.

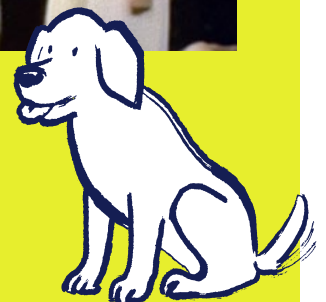


Celebrating 40 years of Guide Dogs in Wales

This September, we're celebrating 40 years of guide dog training in Wales. Both the BBC and ITV covered the opening of our base at Trevillian House in the Pontcanna area of Cardiff in 1986, which was set up to produce 30 guide dog partnerships a year.

It meant people with sight loss in South Wales no longer had to travel to Exeter in Devon to train with a new guide dog. The centre also offered aftercare and advice to South Wales's 120 guide dog owners at the time. Guide Dogs Cymru is now based at Eastern Business Park in the St Mellons area of the city.

To mark the anniversary, we've tracked down some of the people who trained and worked at Trevillian House and invited them to share their memories at a special event being planned in the city centre.



Remembering Mary Heffer

Guide Dogs' Nottingham Team suffered the loss of their dear colleague Mary Heffer in December. Mary would have celebrated her 35th anniversary at Guide Dogs in January, with her entire career dedicated to the role of Vision Rehabilitation Specialist (VRS). A VRS supports and trains people with sight loss to promote and enhance their independence, often assisting them towards getting a guide dog.

In the eulogy he gave at Mary's funeral, her manager Gareth Evans told the story of a client Mary had trained in the past, but who had recently been helped by a different team member. To express just how well they had been supported by the recent



colleague, the client said: "I tell you how good they were, they were nearly as good as Mary Heffer."

On the scent in Bristol

From snuffle mats to hanging plastic bottles and a tent, these are all part of a new PAWS (Positive Activities With Scent) room, recently created at our Bristol Regional Centre.

The team designed the space for dogs in training to explore and use their senses – what's known as enrichment – but it's now proving useful for training too.

Nik Gardner, Guide Dog Partnership Operations Manager, said: "We hide treats around the room which encourages them to sniff. Not only is this fun for the dog, it helps familiarise them to sounds, surfaces and



textures, or to ignore specific distractions. You know when you hear the sniffing they're having a great time, and it's good for them."

Help us cut our long-term medication bill in half!

Does your guide dog or guide dog puppy have long-term medication, such as for a skin condition? Our new agreement with The Animal Charity Pharmacy could help us save 50% on medication costs, because they provide lower-cost medicines to charities.

We will register your dog, explain the process and provide in-person support

where needed, to help you set up your own account. Once ordered, the medication will be delivered to your door, saving you a trip to the vet, and saving us vital funds.

If your dog receives long-term medication, email us at scripts@guidedogs.org.uk, or call Guide Line on **0800 781 1444**.

Guide Dogs Puppy Packs are here!



If you've puppy raised for us, firstly, a huge thank you! You'll know how exciting it is to prepare for your puppy, and how you want to have everything ready for the big day.

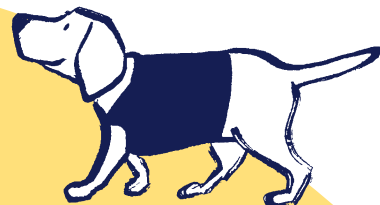
Until now, we have ordered, bought and provided vital equipment to our puppy raising volunteers one item at a time. But we wanted to give our volunteers a better experience, make the best use of staff time, and guarantee we were getting the best value for every pound.

After much collaboration between teams at Guide Dogs, and vital help from our corporate sponsors, we launched our new Puppy Packs in April to volunteers about to receive a

puppy. Delivered direct to Puppy Raisers' homes, the packs contain all the essentials, fully branded and ready to go, tailored either to a first-time Puppy Raiser or to someone who's had a pup before.

The packs give our volunteers a great welcome to their new puppy, and they enable our staff to focus on supporting them, rather than delivering equipment. And by ordering and contracting at scale, the financial savings to Guide Dogs are really significant.

Although the packs have more equipment in them than we have previously provided and are a real treat to receive, we're saving 42% per year on materials alone by purchasing this way. Additionally, much of the pack contents go with the pup when they go into training, reducing the need to buy again later on.





So, how does the process work? Haley Andrews, who headed up the project, explained: "Once we know a new puppy is going to a volunteer, they receive an email with a link to CDL, the company delivering all our packs. That link lets you select a large pack if you're a first-time Puppy Raiser, or a small pack if you have raised a pup before – the only difference is the larger packs contain a crate.

"The packs arrive straight to your home within a few days, and they contain an array of things you'll need for the pup, from bowls to bedding, brushes to toys, leads, collars and even a new vet bed for inside the crate.

"The box itself folds flat for storage until you're ready to return any items to us, and inside the box the vet bed keeps everything protected, so there's no packaging to throw away.

"I just want to say a huge thank you to our partners who have made this possible – Royal Canin, who have been so generous with supporting these packs, and Ancol, Company of Animals, and Petlife International.

"It's been a real team effort to work with them in developing this pack, and we're all really excited to share the finished product. We're looking forward to seeing how they work in action and taking any learnings, then we'll look to extend the concept – watch this space!"

Find out more about Puppy Packs at tinyurl.com/GuideDogsPuppyPacks.

Schools can get involved too!

We've developed a great Puppy Pack initiative for schools. For a £150 fundraising target, our Schools pack helps children learn about Guide Dogs and complete a colouring and writing competition, with the winning card from each school going into a Puppy Pack. It's our way of connecting those who help these little puppies grow into life-changers – one of our favourite cards is from the Reception classes at St Edmund Champion Catholic School which reads 'Good luck with your training! We know you will be a super guide dog pup'.



Need help?

Here's who to call and when



Guide Line:

0800 781 1444

(Monday to Friday, 9am to 5pm)

Emergency Out-of-Hours line:

0345 143 0217

The health and welfare of our dogs is a top priority for us, and we're lucky to have a whole community of staff, guide dog owners and volunteers who feel the same way.

If you've spoken to our brilliant team at Guide Line you'll know that they can help you with any queries, issues or worries, and they're there to support you Monday to Friday from 9am to 5pm.

If something happens outside of office hours, we have on-call colleagues who cover our Emergency Out-of-Hours phone line. This is for those situations which can't wait, like an urgent dog health or welfare concern.

They will help you access the right solution; this could be by providing you with advice, referring you to take your dog to your local out-of-hours veterinary provider, or asking you to contact Guide Line when it's next open.

Kelly Newton is an Operations Manager at Guide Dogs and is also part of the Emergency line team. She said: "Guide Line are your go-to for anything during the day, and if you have a concern, do call them rather than leaving it to the evening, because then we can put a plan in place if needed.

"That said, dogs work to their own timelines and will sometimes wait until after office hours to become unwell, and that's where the Emergency Out-of-Hours team comes in."

Knowing the right number to call means you're prepared, and as a charity it helps us to be more effective with our resources. Along with our in-house teams, your local veterinary provider plays an important part in your dog's health and welfare.

Kelly added: "If you are seriously concerned about the immediate health or welfare of your dog, please call your local vet, or their out-of-hours service provider, first, then call us so we can provide you with support and advise as necessary."

Bikers prepare guide dog puppies for the road ahead

In April we released a media appeal for avid motorcyclists to volunteer as puppy raisers to help socialise our young dogs, after we discovered that dogs are often afraid of motorbikes.

We ran a survey which found that 57% of UK dog owners say their pets become stressed around motorbikes, with eight in 10 saying engine noise is the biggest trigger. A further 39% say their dog is also unsettled by people wearing helmets - including bikers, delivery riders and cyclists.

For working guide dogs, an unexpected fright triggered by a passing motorbike can pose a danger for both owner and dog. So we issued a plea for bikers to come forward as volunteers, as they can provide puppies with safe, gradual exposure to motorbikes as part of their home environment while helping raise our pups to become life-changing guide dogs.

To illustrate our case, we arranged for 10-week-old golden retriever guide dog puppy Kian to meet members of the Harley Owners Group (HOG) in Kidderminster in the West Midlands. Our adorable photos appeared in the Daily Telegraph online, the Daily Mirror online, in print in the Daily Star and Metro, and on ITV News and more.



Academy celebrates its 50th graduate!

The Guide Dogs Academy was set up in 2020 as our way of attracting, training and retaining the Guide Dog Mobility Specialists and Guide Dog Trainers of the future.

For the first time, it allowed us to have a team of people dedicated to teaching and coaching our technical workforce – that is, anyone working directly with our dogs and their future owners. Academy enables us to recruit in greater numbers, attract candidates from different backgrounds, and give all our new learners the same pathway into their new career.

Having trained the trainers and set up the programme, we welcomed the first Academy learners into teams across the UK in January 2022, and we recently met up with one of that first cohort, Dan Hutton.

Dan said: “I remember walking in on my first day and feeling a mixture of pride and terror at what I was taking on – there’s a lot to take in!

► Dan with guide dog in training Mitch.



▼ Lucy, Lauren and Rachael at their graduation.



“I still feel like I’m learning every day, but I can’t imagine doing anything else now, and I’m so proud of the partnerships I’ve trained, and being part of making such a difference.”

Since those first cohorts we have expanded Academy’s remit, and now it’s the entry point for all our technical staff. We look for people with a coaching mindset who are optimistic, good under pressure, and who thrive on seeing the impact they’re making to people’s lives.

This Spring we celebrated our 50th Academy graduate in Cardiff. Having trained six dogs to be ready for matching during her time in Academy, Lauren Prothero – alongside fellow cohort members Rachael O’Dwyer and Lucy Wilkins – is now a fully-fledged Guide Dog Trainer.

Congratulations to all our Academy graduates!

On the Campaign Trail



Our new research finds children are missing out on support

We've published new research which finds that far too often, children and young people with a vision impairment in England are missing out on the support and learning they need.

More than two thirds (69%) have never received crucial habilitation support essential to their development, and nearly half (45%) have never received support from a Qualified Teacher of Children and Young People with a Vision Impairment (QTVI).

Getting specialist support at the right time is vital in creating a positive learning experience, increasing confidence, and improving opportunities for children and young people during education and later life.

Without the right support, children risk being left behind their sighted peers. We're calling on the Government to fix this by ensuring every young person with sight loss can access high-quality support when and where they need it, and by making every classroom inclusive.

Getting the SEND reforms right

Our findings come at an important moment, as the Government plans to reform the Special Educational Needs and Disabilities (SEND) system in England. This gives Guide Dogs a unique opportunity to influence changes so they support children who are blind or partially sighted.

We organised an event in Parliament for key MPs, taking our research directly to decision-makers to keep children with a vision impairment at the centre of the SEND reforms.

MPs met and spoke to habilitation specialists and QTVIs, alongside parents and young people, who shared their experiences and set out priorities for the reforms.

This is just one part of our campaign to shape these reforms, and we'll continue to push so every young person can access early, specialist support – helping them to achieve their full potential and live independently in later life.

Visiting unique places to build lifelong skills

Outside the classroom, our puppies enjoy all sorts of adventures that help build the skills needed to navigate the real world. They learn how to travel and remain calm on different types of transport, from car rides to planes, and have access to explore unique locations which are normally off-limits to pet dogs. Each new setting helps them grow in confidence, and our puppy raisers get to share each heartwarming step of their life-changing journey.

Puppy class takes off at Southampton Airport

Southampton Airport welcomed seven guide dog puppies who descended for dedicated training to experience a working airport.

The puppies, aged from six months to just over a year old, embarked on an airside tour of the airport, navigating departure lounges, shops, cafés, lifts and baggage reclaim areas. They even got to practise boarding a plane and settling on the floor of the cabin.

Sharon Wallenberg, volunteer puppy raiser, said: "My puppy can experience all the different sights, sounds and smells of an

airport because in his future life, hopefully as a working guide dog, it may be that his owner takes him on a plane, so somewhere in the back of his mind he'll think: 'I've done this before.'"

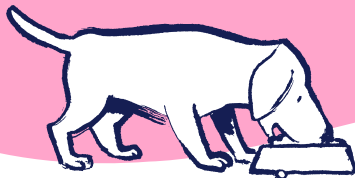
Puppy Development Advisor Leanne Kelly added: "A big part of this is socialisation and getting the puppies used to different environments, so visiting Southampton Airport was a great experience for them. All the pups did brilliantly, helping them build positive associations with airports that they'll remember if they visit as working guide dogs."



Edinburgh Castle hosts a historical puppy class

In March, seven puppies in training across Scotland headed for an exclusive puppy class at Edinburgh Castle, a unique, fun and beneficial experience for them.

Puppy Development Supervisor Fiona Fraser said: "Giving guide dog puppies different experiences, visiting places with different surfaces, sights, sounds and smells, helps them to become well-rounded and confident guide dogs."



Essex puppy raisers head to the big city

Six puppy raisers from Essex visited our London Community Team for an insight into what their puppies will be getting up to when they start their formal training.

Accompanied by Puppy Development Advisor Joanne Thorn, the group caught the train to The Big Smoke along with four guide dog

puppies. It was a great opportunity for the pups to visit the office where some of them will soon be starting their formal training.

Guide dog puppy Milo is just one pup who will soon start his training in London with Guide Dog Mobility Specialist Amy Brewer. Joanne said: "Milo is based in Essex, living with a family, and although he has been into London numerous times, this was his first trip to our Euston office.

"This was a great opportunity for Milo and his puppy raisers to meet Amy and find out about the next stages of his journey."

To find out more about becoming a volunteer puppy raiser, visit [guidedogs.org.uk/puppyraiser](https://www.guidedogs.org.uk/puppyraiser).

To read more about what it's like to be a Puppy Raiser, read Puppy Development Advisor Terri's blog at tinyurl.com/TerriThePDABlog.



Reece dances his way to become a **celebrity ambassador**

Our celebrity ambassador roster has welcomed an exciting new addition - Scottish dancer Reece Clarke, Principal Dancer of The Royal Ballet. Reece was chosen for his authentic connection to Guide Dogs, demonstrable support for our fundraising, and willingness to create media opportunities for Guide Dogs.

Reece grew up in Airdrie, North Lanarkshire, alongside three older brothers who all trained at the Janis Ridley School of Dance in Scotland before joining The Royal Ballet School. Reece's support for Guide Dogs became apparent in Autumn 2024, when he raised £11,000 for us by performing two sell-out shows in his hometown.

When Guide Dogs held a puppy familiarisation event at the Royal Opera House (ROH) last year, the session made quite an impact on Reece, persuading him to support us further.

We then welcomed Reece for a visit to Guide Dogs' South East Regional Centre in Redbridge, London. We introduced him to the basics of guide dog training and he met our dogs, trainers, and was given a tour of the centre.

Reece has since helped make Guide Dogs' second visit to the ROH happen, when a group of guide dog owners, guide dogs and guide dog puppies attended a rehearsal of The Nutcracker ballet. The visit also helped us promote our Christmas Sponsor a Puppy pups, as one of them was called Clara - the name of The Nutcracker's main character.

Alongside his Royal Ballet residency, Reece has performed around the world to great acclaim, including being privileged to perform as a guest artist of the American Ballet Theatre in New York and at the Opéra National de Paris. He has also been a painters' muse on Sky Arts' Portrait Artist of the Year.



A Day in the Life Of...

Nicky Schwarz, Sighted Guide Training Officer

"I started my career here as a Guide Dog Mobility Specialist, matching and training our partnerships, and the experience I have from my first role is so useful in the Sighted Guide Training team.



"We are here to open up places and spaces for people with a vision impairment, and by teaching these skills we are normalising sighted guide assistance whether that's in workplaces, leisure spaces or just out and about.

"I love the variety of the work, and seeing the impact of what we do. For instance, at the moment I'm working with Dan. He's waiting to be matched with his next guide dog, but in the meantime we are providing sighted guide training to his colleagues at Hastings Direct, the insurance company.

"We'll be spending time at their offices, and outside as well, teaching the common language of sighted guide training – how to introduce yourself, how to offer assistance and listen to what the person needs, as well as the practical elements of how to guide someone through a space.

"We usually find that there's a lot of willingness to help, but people are unsure of what to do or how to go about it. That changes as people learn the skills – colleagues engage more readily because they're confident in what they're doing and know how to help.

Everyday sighted guiding tips



- **Ask first**, don't assume someone needs help.
- **Introduce yourself** clearly.
- **Listen** to what the person needs.
- **Communicate clearly** as you guide.
- **Look out for obstacles** like steps, doors or busy spaces.
- **Support independence**, guide, don't take over.

"The aim is that when Dan gets his next dog he'll have that great partnership, along with an environment where he feels really supported and safe because the people around him have the skills they need. And of course, they are able to assist anyone else they meet with a vision impairment, whatever the context.

"Being able to say 'Yes, I'm sighted guide trained' is a statement that you understand the framework and how to help. I wish we had the opportunity to provide everyone with this training – it's life-changing!"

Caitlin and Mabel's story



Buddy dog Mabel has been more than just a dog to Caitlin; she's been a listening ear through dark periods of mental health.

Eileen first realised her daughter Caitlin had a problem when she was two years old. Eileen said: "Caitlin was putting her face really close to the TV and her books. She was also tripping over a lot. It wasn't immediately obvious, and we wondered if she was just clumsy, but we decided to get her checked."

"It took seven years of going between the GP, hospitals and eye consultants before we got a diagnosis of Cone Rod Dystrophy in December 2019. It was really frustrating."

Eileen says the most difficult thing about Caitlin's sight loss is the impact it has had on her mental health. Eileen added: "Caitlin went through a dark period where she told her teacher she didn't want to live any more. They referred her to a psychologist and we were all hugely worried."

"We asked Caitlin what was on her bucket list before her vision got worse, and she said she wanted a dog. We had a vision impairment specialist teacher in primary school, and she

told us about Guide Dogs and buddy dogs, so we attended a discovery day and they helped us understand how the dog could help. After the discovery day, we did a home check on a video call, and we got Mabel two months later."

Describing the moment Mabel arrived at the family's home in the West Midlands, Caitlin said: "I was so happy. She's a very friendly and funny dog. When she's lying on the ground, she rolls on her back and tries to catch her tail."

Now aged 17, Caitlin is proud that she's now managing her sight loss better with the help of her buddy dog. She said: "Mabel is basically my new psychologist! She's a real friend." Eileen agrees: "Having a dog has really helped, it gives Caitlin someone to talk to. During the pandemic, Caitlin felt really lonely as she had to isolate a lot and she struggled to make friends in her new school."

"Mabel has also given Caitlin a new purpose. Every night before bedtime, Caitlin teaches her tricks. It takes a few weeks but then she catches on."

Mabel is bringing the whole family together too, encouraging Caitlin and her brother to play together, go on walks and introduce the family to new neighbours.

Caitlin sums up Mabel's influence on their family best:



“
She's brought so much joy to this house! She makes us spend more time together and that has helped everyone.
”

Steven goes round the houses to name a guide dog puppy

A huge thank you to Steven Mitchell from Lisburn in Northern Ireland, who completed an incredible 50km ultramarathon in support of Guide Dogs in just 5 hours and 20 minutes. What makes this achievement even more unusual and remarkable is that Steven completed this feat... By running 556 laps of his cul-de-sac!

Taking on this kind of challenge is no small thing, but what made it truly special was the reason behind it. Steven chose to fundraise for Guide Dogs as it's a cause close to his heart after growing up in a family who have raised four guide dog puppies to date.

Those experiences clearly left a lasting impression, with the guide dog pups becoming a meaningful part of family life over the

years. One puppy, Stan, was even involved in Steven's proposal to his wife, Gemma, while another, Leo, took on the role of ring bearer at their wedding.

Steven's run was supported by a brilliant crowd of friends and family, all helping to keep his spirits high throughout the many, many laps. Mascot Penny was also there to cheer Steven on and even join in for a few laps, while puppy Raymond was also there, ready to celebrate at the finish line (and provide some well-earned cuddles!).

Steven raised a total of £3,755.75 and so thanks to his amazing efforts, he will also have the honour of naming a future guide dog puppy. It's an incredibly fitting outcome given the role guide dogs have played in his life.

Many thanks to Steven for taking on such an incredible challenge and for choosing to support Guide Dogs and make a real difference.

To find out more about naming a guide dog puppy, visit [guidedogs.org.uk/NAP](https://www.guidedogs.org.uk/NAP).



▲ Steven and Gemma on their wedding day with a dapper-looking ring bearer, Leo.



◀ Steven's dad Geoffrey with the family's latest guide dog puppy, Gemma and Steven handing their donation to Robert from the Lisburn Fundraising Group.

Helen leaves a life-changing gift to Guide Dogs

Helen's first memory of the charity Guide Dogs was as a little girl, when her mum would give her some change to pop into the life-sized dog collection box in their local shop.

As she grew older, she noticed the enjoyment people with sight loss received from touching and smelling the beautiful flowers in a sensory garden near her home. Then, when she started work, her first job was on a switchboard at a college for people who were blind or partially sighted.

It was there that Helen saw first-hand just how much guide dogs can help. She said: "I realised just how important they are. To see how much more confidence it gave people and how they were able to get out and about so much more easily and confidently was really lovely."

When writing her Will, Helen knew exactly what she wanted to do. She explained:

“ I decided to leave a gift in my Will to Guide Dogs. It just seemed a natural progression of my life, from that involvement when I was a child, that little spark of interest that then ignited.

” Thanks to people like Helen leaving gifts in their Wills to Guide Dogs in the past, we're able to help people with sight loss today. People like David, who says of his first guide dog Scooby: "The first time I put a harness on and walked Scooby, it just felt right. I stepped back into the house beaming from ear to ear. I couldn't believe the joy that it gave me to have my independence back."

To find out how a gift in your Will could help transform lives, visit [guidedogs.org.uk/giftsinwills](https://www.guidedogs.org.uk/giftsinwills).



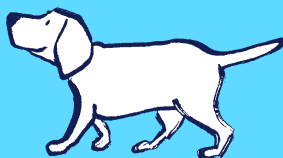
Dear supporters

I want to say a huge thank you to each and every one of the people and teams in these pages who have raised money for Guide Dogs. Without you, we simply couldn't fulfil our purpose of helping people with sight loss to live the lives they choose.

I wish you all an amazing summer,

Terry McGrath

Chief Marketing & Fundraising Officer



► Guide Dogs' IS Directorate has raised £5,959 towards its £10,000 goal to name a guide dog puppy. Staff have taken on fundraising challenges, including Business Partner Assistive Technology Darren Paskell and Head of Service Delivery Ande George abseiling down the Spinnaker Tower, three colleagues completing a Tough Mudder, Lead Business Analyst Hazel Swan running the Scottish 10k, and Technical Architect Jon Hutton running the Reading Half Marathon.



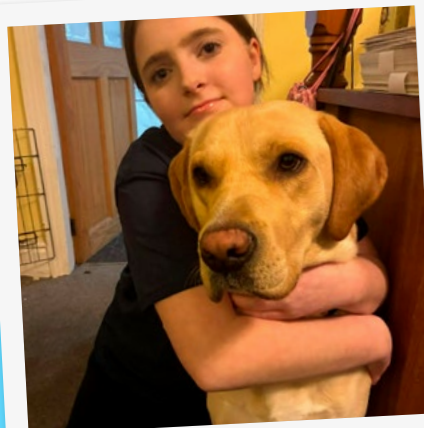
Darren at the Spinnaker Tower



Dan DroiD and Luna

◀ A guide dog owner from Weston-super-Mare, Somerset, who performs as Dan DroiD, has raised £36,548. Dan tours the South West with guide dog Luna, collecting donations at gigs. His wife Lynsey, daughter Mina and son Loki play a key role by running a special draw, where attendees donate for the chance to name a guide dog puppy. So far, draw winners have named 14 pups, with three more on track this year.

► Sophie Roe, aged 12, was inspired by her pet Labrador Henry to raise money for Guide Dogs. She walked seven miles from her home in Nebo, Anglesey, to Bull Bay Golf Club, joined along the way by members of Guide Dogs' Anglesey fundraising group including black Labrador guide dog Spirit.



Sophie with Henry

The team at Dignity Pet Crematorium in Hook, Hampshire, held a Christmas Memorial Bauble campaign, raising more than £1,544 for 10 different charities including Guide Dogs. Thanks to the incredible generosity of families who chose to remember their beloved pets by dedicating a bauble while helping others at the same time, Guide Dogs received £154.



Selwyn at Kardomah

◀ Guide dog puppy Selwyn visited Swansea's Kardomah Café to thank staff and customers for raising £5,000 to choose her Welsh name. Selwyn is the second dog named by the Kardomah, and staff are already fundraising for a third.

▶ Isla McAleese raised £37.02 after her Brownie unit, the 2nd Worthing Methodist Brownies in West Sussex, was visited by a puppy raiser and guide dog puppy in training. Isla designed donation boxes for fellow Brownies to colour in and take home for family and friends to fill. She also organised a 'guess the name of the dog' game, with two soft toy dogs as prizes.



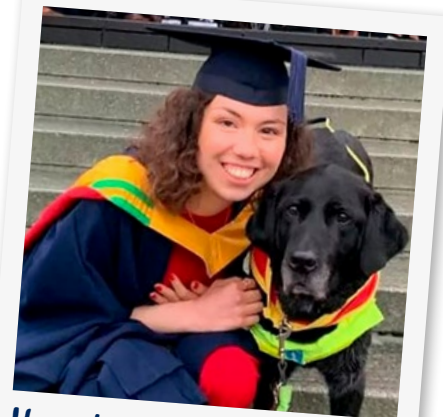
Isla with donation boxes



10th Worthing Beaver Scouts

◀ The 10th Worthing Beaver Scout Group in West Sussex were inspired to raise £102 after a visit from a volunteer puppy raiser and her guide dog puppy in training. The group made donation boxes to take home for their family and friends to fill up. Beavers Section Leader Nathalie Van Niekerk said: "I'm very proud of our Beavers, we loved helping make a difference for a good cause!"

▶ Memories of a much-loved guide dog inspired siblings Hannah and Gareth Stevenson from Cardigan, West Wales, to run the Liverpool Half Marathon, raising more than £3,000. They named a guide dog puppy Ozzie after Hannah's first guide dog, paired with her when she was just 15, making her Wales's youngest owner at the time. Ozzie learned commands in Hannah's native Welsh so he could accompany her to school. Their mum Jackie is also a Guide Dogs puppy raiser.



Hannah with Guide Dog Ozzie



Chelmsford group

◀ Shipping and logistics firm UPS hosted a blind football tournament at its London hub, supported by the Chelmsford fundraising group. The family-friendly event welcomed colleagues and the local community with tea, coffee and snacks. Supporters raised £1,600, which UPS match-funded, bringing the total to £3,200, enough to name a guide dog puppy. The Chelmsford group were also on hand to chat to attendees and share more about Guide Dogs.

Congratulations to our new partnerships

New partnerships are listed by community team. Each listing details owner, guide dog, town, breed, Puppy Raiser, Breeding Dog Holder and Fosterer. Please note that only those who've given permission are included.

You'll see abbreviations showing each dog's breed: L for Labrador, GR for Golden Retriever, GSD for German Shepherd Dog, and STP for Standard Poodle. An "x" between letters (like GRxL) means a cross of those breeds. An asterisk (*) is simply used to separate the Puppy Raiser volunteer role. Some names may be missing if a volunteer chose not to be listed.

Warm congratulations to all our new qualifiers, and heartfelt thanks to every person who made these partnerships possible.



Belfast

Sharon Gordon & Petra L Susan West from Montrose * Helen Daw from Bedford. Mrs Barbara Stone from Kenilworth. Mrs Elayne Coupar from Forfar. Mr Graeme Stitt from Belfast.

Orlaith Headley & Calvin GRxL Vicky Shorrocks from Dunfermline * Linda Monk from Worcester. Ms Leela Cubillo from Lichfield. Ms Kerry Stewart from North Berwick. Ms Amy Monks from Forfar. Helen Kennedy & Piper L Pauline Duff from Cambuslang. Aileen Goring from Glasgow * Mrs Kerry Walker from Montrose. Miss Anna Robinson from Newtownards.

Gary Moore & Elgar LxGR Barbara McClune from Newtownabbey * Patricia Hicks from Sutton Coldfield. Mrs Wendy Milne from Forfar.

Birmingham

Louise Collins & Argus GR Judith Everett from Evesham * Emily Butler from Milton Keynes. Mrs Lee Butler from Banbury.

Claire Croker & Rigby LxGR Kate Entecott from Birmingham * Denise Phelps from Bromsgrove. Miss Katherine Gunn from Leamington Spa. Mr David Barlow from Warwick.

Yvonne Griffiths & Hazel STPxL Wayne Eddings from Peterborough. Myriam Steadman from Manea * Jane Field from Warwick. Mrs Linda Landsberg from Milton Keynes. Ms Liz Leck from Kenilworth.

Elizabeth Handy & Badger L Mary Shannahan from Nuneaton * Gail Winnett from Birmingham. Mr Darren Wright from Leamington Spa.

John Hilbourne & Lace GRxGR Tony Edwards from Chorleywood * Andrew Watson from

Leamington Spa. Mrs Louise Neill from Alcester. Mrs Jayne Crinigan from Rugby. Ms Patricia Rosas from Leamington Spa.

William James & Biscuit LxGR Darrell Tilley from Leicester * Shalini Bristow from Worcester. Mrs Catherine Kelso from Alcester. Mrs Lindy Hobbs from Droitwich.

Pat Mulqueen-Wood & Enya GRxL Shaun Morris from Evesham. * Howard Dorrell from Worcester. Mrs Rachel Kiernan from Droitwich.

Susan Wilde & Doris LxGR Julie Foster from Worksop * Claire O'Keeffe from Leamington Spa. Miss Rachel Strudwick from Leamington Spa.

Bristol

Marilyn Anderson & Hera LxGR Brenda Jackson from Stockport * Avril Lancaster from Birmingham. Mrs Hannah Allen from Kenilworth. Mrs Nicola Phelan from Manchester.

Toby Davey & Boston GRxL Diana Baker from Portsmouth. Helen Knowles-Battye from Bognor Regis. Sheila Lunn from Emsworth * Diane Walinski from Coalville. Mrs Sally Sleath from Warwick. Mrs Tracey Lane from Cardiff.

Kirsty Davies & Bobby LxGR Jerome Pereira from Swindon * Sue Davy from Oldbury. Miss Katherine Gunn from Leamington Spa. Mrs Alison Meertens from Bristol.

Paul Eades & Rhea LxGR William Tirebuck from Wootton * Denise Phelps from Bromsgrove. Miss Katherine Gunn from Leamington Spa. Mr Andrew Steward from Bristol.

Sian Healey & Lennie L Zoe May from Westbury * Suzanna Adey from Derby. Mrs Dulcie Parry from Rugby.

Emilia Mercer & Robyn L Karon Thomas from Pontypool * Samantha Hanley from Telford. Ms Lucy Likeman from Bristol.

Helen Mitchell & Joe GRxL Helen Fry from Taunton * Ally Stokes from Newton Regis. Mrs Sally Sleath from Warwick. Mrs Sarah Meadows from Bristol.

Steven Moseley & Casper LxGR Christine Helen Mason from Altrincham * Pernelle Yates from Preston. Caroline Clifton from Stratford-upon-Avon. Mrs Barbara Stone from Kenilworth.

Sandra Porter & Nala L * Linda Atkins from Stratford-upon-Avon. Mrs Christina Ransom from Bristol.

Debbie Seaton & Diffy LxGR Rob Cowlard from Bristol * Tracy Inman from Coventry. Mr Wing Sang Poon from Cardiff.

Anthony Trevennen & Quentin LxGR Jane Ollier from Ottery St Mary * Philip Crowther from Evesham. Mrs Barbara Stone from Kenilworth. Dr Stephanie Miller from Bristol.

Bristol Academy

Lynne Regan & Gunner L Margaret Thompson from Radstock * Gary Loosley from Stockton. Miss Alice Hall from Bristol.

Cardiff

Christine Gray & Dolly GRxL Angela McErlane from Usk * Karen Hillman from Rugby. Miss Jessica Green from Cardiff. Miss Lucy Roberts from Swansea.

Robert Green & Hobson GRxL * Linda Fothergill from Solihull. Mr Greg Butler from Banbury. Mrs Dawn Foley from Bristol.

Jeremy Malitte & Gino GRxGSD Nicola Evans from

Bristol * Clare Pinks from Rugby. Mr Richard Edge from Flyford Flavell. Mr Ian Champness from Newport.

Kate Meeks & Harvey LxGR Ian Gowling from Gosport * Janet Leggett from Upper Longdon. Miss Rachel Ashley from Nuneaton. Mrs Elizabeth Nicholas from Hengoed.

Cardiff Academy

Konrad Galen-Bisping & Robbie LxGR Frances Coppin from St Austell * Denise Phelps from Bromsgrove. Miss Katherine Gunn from Leamington Spa.

Janice Powers & Diffy L Clare Murray from Bristol. Steven Ives from Wimborne * Linda Fothergill from Solihull. Mrs Tertia Latham-Marr from Redditch. Miss Bethan Evans from Pontypridd.

Laura Scott & April L Helen Knowles-Battye from Bognor Regis. Karen Knight from Farnham * Jane Knifton from Leamington Spa. Mrs Katie Roots-Johnson from Bishops Itchington. Audra Smith from Bridgend.

East Scotland

Elsbeth Brown & Ruskin GR Margaret Foster from Livingston * Leigh Court from Balsall Common. Miss Rosie Edwards from Kirriemuir.

Christine Ferreyra & Monica LxGR Alana Taylor from Bangor * Shirley Thomas from Daventry.

Sylvia Johnston & Grace GRxL Elizabeth Wyroslawski from Bathgate * Margaret Langford from Warwick. Mr Colin Murray from Forfar.

Nancy McKay & Stanley L John Monagle from Irvine * Steve Parsons from Melksham. Mrs Nonie Toogood from Leamington Spa.

Hilary Russell & Julieta GRxGR Kathleen Heron from Gateshead * Susan Smith from Dudley. Mrs Lee Butler from Banbury.

Kevin Russell & Bonny GRxGSD Brenda Lackie from Perth * Trudy Evans from Coventry. Mrs Louise Millard from Lutterworth. Mrs Victoria Robb from Forfar.

Lorna Spiers & Prince LxGR * Edmund Dixon from Market Harborough. Mrs Sheila Hemming from Evesham. Miss Claire Huxley from Leamington Spa. Miss Jayne Dale from Beverley.

East Scotland Academy

Miles Butcher & Laura LxGR Linda Connor from Blairgowrie * Yvonne O'Rourke from Shipston-on-Stour. Miss Katherine Gunn from Leamington Spa. Mrs Claire Brown from Kirriemuir.

Charles Clark & Lenny GRxGR Linda Ruxton from Eyemouth * Kathryn Yeo from Gloucester. Mrs Sarah Byrne from Banbury. Mr Ryan Milne from Forfar.

Amanda Mulvanny & Mateo LxGR Alan Strange from Edinburgh * Carla Tucker

from Rugby. Mrs Dulcie Parry from Rugby. Miss Nicky Reid from Forfar.

Gillian Scott & Rudy L Susan Ireland from Dronfield * Steve Giles from Leicester. Mr Ian Crewe from Nuneaton. Mrs Jacqui Williamson from Forfar.

Exeter

Andrew Bouchier & Rowley GRxGSD Julie Brake from Bodmin * Jennifer Lanham from Cheltenham. Mrs Natasha Egan from Sidmouth.

Ruth Evans & Viva GRxL Mark Hobson from South Shields * Terry Crane from Kidlington. Mrs Louise Millard from Lutterworth. Mr Peter Silkstone from Leeds. Miss Helen Fearn from Leeds.

Daniel Hall & Colin L Ian Vosper from Exeter * Anna Holden from Merstham. Mrs Hannah Allen from Kenilworth. Mr Ian Vosper from Exeter. Mrs Kelly Smith from Exeter.

John Hardy & Willow GRxGR Jackie Lancaster from Burnley * Sarah Absolom from Milton Keynes. Mr Paul Crowe from Kenilworth. Mrs Louise Blackhurst from Bolton. Mr Jay Avent from Cheddar.

Ava Jolliffe & Ollie STPxL Joanna Wareham from Clevedon * Christine Spratt from Rugeley. Mrs Linda Landsberg from Milton Keynes. Mrs Alison Radford from Honiton.

Kate Mitchell & Arnie GRxL Isobel Cooper from Bristol * Sarah Butler from Milton Keynes * Mrs Maria Spence from Southam * Mr Andrew Pollard from Exeter.

Andrew Quest & Scottie GRxL Richard Davy from Reading * Susan Mary Ward from Leamington Spa. Ms Leela Cubillo from Lichfield. Ms Clara Turner from Exeter.

Debra Roffey & Arianna L Claire Hyde from Stoney Middleton * Charlotte Knox-Wright from Hook. Dr Victoria Landeg from Reading.

Exeter Academy

Heather Chang & Trixie GRxGR Carol Moran from Clevedon * Katie Harris from Redditch. Mrs Michelle Caston from Cardiff. Ms Helen Matthews from Exeter.

Sheila Lilliman & Jeanie LxGR Helen Stocks from Cannock * Shirley Thomas from Daventry. Miss Tyler Knee from Exeter.

Maria Milburn & Jodie GRxGR Joanne Johnson from Middlewich * Susan Smith from Dudley. Mrs Lee Butler from Banbury.

Leamington

Sarah Davison & Holly L Serena Wing from Wymondham * Linda Atkins from Stratford-upon-Avon.

Lina Fatania & Jasmin GR Tracy Wakeling from Lymington. Vanessa Pellow from Warwick * Jackie Henderson from Moreton-in-Marsh. Mrs Lee Butler from Banbury. Mr Evan Chomer from Leamington Spa. Mrs Tabitha Averis from Leamington Spa.

Kevin Faulkner & Tony L&GR Denise Widdowson from Nottingham. Emily Presgrave from Boston * Sue Davy from Oldbury. Miss Katherine Gunn from Leamington Spa. Ms Elizabeth Norton from Warwick.

Shadat Khan & Moby L Sally Coulton from Nottingham * Catherine Keenan from Halesowen.

Miles Northwood & Orwell GRxGSD Fiona Gunn from Sutton-in-Ashfield * Clare Pinks from Rugby. Mr Richard Edge from Flyford Flavell.



Philippa Pascoe & Micah GRxGSD Gary Wilson from Northampton * Sharon Faulkner from Coventry. Mr Paul Black from Solihull. Mr Darren Love from Warwick.

David Priest & Shadow L Alexandra Harris from Wellingborough * Sue Padget from Kettering. Mrs Tricia Collier from Warwick. Mr Dan Dixon from Leamington Spa.

Raelene Sturgeon & Dahlia GR Vanessa Pellow from Warwick * Jackie Henderson from Moreton-in-Marsh. Mrs Lee Butler from Banbury. Mrs Felicity Stratton from Warwick.

Leamington Academy

Sarah-Jane Buffrey & Queenie GRxL Irene Crow from Droitwich * Diane Walinski from Coalville. Mrs Sally Sleath from Warwick. Mrs Clare Dempsey from Leamington Spa.

Wendy Pope & Greta GSDxGR Vhairi Bolland from Nottingham * Sarah Jones from Rugby. Mr Graham Hodson from Redditch. Miss Hannah Finch from Warwick.

Leeds

Sophie Allanson & Freya GRxL Erika Spratt from York * Margaret Reynolds from Rugby. Mrs Sally Sleath from Warwick. Miss Helen Fearn from Leeds.

Phillip Arnold & Imber GRxL Suzanne Burton from Huddersfield. Jonathan Bailey from Pudsey. John Cathrall from Middlesbrough * Lisa Hunt from Stratford-upon-Avon. Ms Melissa Morgan from Leeds.

Jacqueline Clark & Fergus L Stephen Pollard from Warrington * Mr Terry Pemberton from Leigh. Mrs Joan Pease from Leeds.

Tony Mollica & Zander L Janet Baldock from Wakefield * Helen Edkins from Walsall. Dr Beth Carmichael from Wetherby.

Charlotte Procter & Percy GRxGR Edward Barton from Driffield * Michael Jones from Leicester. Mr Greg Butler from Banbury. Mrs Janine Glendinning from Leeds. Mrs Lynda Fuszard from Leeds. Mr Phil Henderson from Keighley.

Jacqueline Scully & Sherry LxGR Sue Johnson from Brigg * Miss Jayne Russell from Leeds.

Dean Wilcox & Iona GRxL Lisa Millar from Melrose * Lisa Hunt from Stratford-upon-Avon. Miss Olivia Harrison from Leeds. Mrs Claire Jackson from Leeds.

Liverpool

Andrew Graham & Andy L Patricia Symonds from Sale * Helen Edkins from Walsall. Mrs Jane Nicholson from Bolton. Mr Piers Callan from Wirral.

Mark Tilsley & Norris LxGR John Storey from Cheadle. Keith Welsh from Stockport * Yvonne O'Rourke from Shipston-on-Stour. Miss Katherine Gunn from Leamington Spa. Mrs Karen Bennetto from Wigan. Mrs Emma Porter from Liverpool.

Sarah Wright & Lark GRxGR Cheryl Hamilton from Altrincham. Rebecca Wray from Warrington * Kathryn Yeo from Gloucester. Mrs Sarah Byrne from Banbury. Mr Scott Campbell from Leigh.

Liverpool Academy

Dennis Atkinson & Zara LxGR David Tierney from Cockermouth * Carla Tucker from Rugby. Mrs Dulcie Parry from Rugby. Mrs Taryn Oliver from Manchester. Miss Sarah Anwyl from Liverpool.

London

Jennifer Abbitt & Susan LxGR Julie Batley from Leigh * Michelle Buckley from Leamington Spa. Miss Katherine Gunn from Leamington Spa.

Niamh Baker & Gilly GRxGSD Susan Ding from Colchester * Sharon Faulkner from Coventry. Mr Paul Black from Solihull. Mrs Jo Aracena from London.

Jeremy Fletcher & Alice GRxL Adrian Christmas from Peterborough * Lisa Hunt from Stratford-upon-Avon. Ms Nicola Mills from Warwick. Mrs Pearl Woodward from Kenilworth.

Natalie Foster-Watts & Jilly LxGSD Ginette Burn from Lightwater * Trudy Evans from Coventry. Miss Alison Fuller from London.

Eric Gallacher & Seve GRxL Alexander Kurze from Oxford * Christine Collins from Leamington Spa. Mrs Lee Butler from Banbury. Ms Veronica Rechten from London.

Paul Johnstone & Bloom GRxL Charlotte Singer from London * Diane Walinski from Coalville. Mrs Sally Sleath from Warwick.

Barry Parfett & Dave L * Sue Padget from Kettering. Mrs Tricia Collier from Warwick. Mrs Sara Robinson from Essex.

Laura Passey & Alba GRxL Zuriel & Lanre Owolana from Rickmansworth. Josefina Van Der Dussen from Woodman Lane * Jack Visser from Redditch. Mrs Maria Spence from Southam. Ms Josefina Van Der Dussen from Woodman Lane. Mrs Elizabeth Dormandy from London.

Alun Peate & Mattie LxGR Philip Wells from Seaford * Janet Leggett from Upper Longdon. Miss Rachel Ashley from Nuneaton. Ms Rita Patel from Ilford. Miss Shuk Yee Ho from London.

Chandni Sony & Maggie GRxL Lichao Geng from Altrincham * Emily Turley from Birmingham. Mrs Lee Butler from Banbury. Miss Kimberley Howarth-Munro from Manchester.

Robert Sutton & Tommy L Sue Coekin from Eastbourne * Janet Paget from Rugby. Hannah Bent from Northampton. Miss Shuk Yee Ho from London.

Daniel Tait & Ron L Sally Hesketh from St Albans * Matthew Cherrington from Kingswinford. Mrs Janina Maria Faulkner from Warwick. Ms Karen Heaton from London.

Carl Williams & Martin GR Paula Price-Sampson from Basildon * Kath Saunders from Shrewsbury. Mrs Louise Neill from Alcester. Mr Roberto Granese from Chigwell.

Maidstone

Mark Adams & Billy LxL Mary Clare Gutteridge from Birmingham * Sam Moyes from Southam. Mr Doug Harrower from Bedworth. Mrs Anne Cadwallader from Southam.

Pamela Byrne & Dancer GRxL Wendy Pattinson from Lancaster. Peggy Broadfield from Lancaster * Jane Franklyn from Daventry. Mrs Sally Sleath from Warwick. Miss Laura Woodward from Bolton.

Bethany Doe & Gwen GSDxGR Rhonda Gulliver from North Walsham * Sarah Jones from Rugby. Mr Graham Hodson from Redditch. Mr Alex Cook from Leamington Spa.

Andrew Eaton & Quiz LxGR Juliet Smith from Poole * Philip Crowther from Evesham. Mrs Barbara Stone from Kenilworth. Mr James Ramsey from Bolton.

Susan Gayler & Yates L Tracey Ellis from Bristol * Mrs Emma Walsh from Barming.

Linda Johnson & Ted LxGR Ann Cassidy from Stockport * Sandra Cox from Marlow. Mrs Louise Ireton from Bolton.

Jefferson Robinson & William LxGR Therese Palmer from Maidstone * Michael Jones from Leicester. Miss Sarah Sheasby from Bromsgrove. Mr Martin Burt from Rochester.

Lynn Rochester & Tansy LxGR Anita Law from Cleator Moor * Carla Tucker from Rugby. Mrs Dulcie Parry from Rugby. Mr Rob McKie from Wigan.

David Smith & Hattie L Alison Brisland from Didcot * Jane Knifton from Leamington Spa. Mrs Katie Roots-Johnson from Bishops Itchington. Ms Lorraine King from Maidstone.

Christo Thiaradt & Cedar LxGR Janice Ashby from Grays * Niamh Davis from Chipping Campden. Mr Ian Crewe from Nuneaton.

Paul Wiles & Cocoa L Elaine Hickman from Etchingham. Virginia Orton from Edenbridge * Sharon Green from Burton upon Trent. Ms Marina Farley from Maidstone.

Manchester

Colin Adamson & Victor LxGR Kathy Osborn from Preston. Graham Broadfield from Lancaster

* Tammi Curran from Rugby. Mr Ian Crewe from Nuneaton. Dr Sue Taylor from Bolton. Mr Nathan Askew from Liverpool.

Chris Clarry & Simon GRxGSD Allan Jones from Bolton * Lorraine Mellor from Birmingham. Mrs Sarah Byrne from Banbury. Mr Paul Clare from Manchester.

Jean Coates & Nigel L Alan Miller from Aberporth * Lisa Hunt from Stratford-upon-Avon.

Amanda Large & Bess L Alex McGibbon from Chorley * Maureen Ross from Redditch. Mrs Tricia Collier from Warwick. Mrs Diane Bamber from Bolton. Mrs Lynn Soper from Bolton.

Janet Pilling & Leon STPxL Alison Tanner-Davies from Wirral * Irene Scott from Warwick.

Catherine Roche & Munro L * Jon Starkey from Malvern. Mr Ian Crewe from Nuneaton. Mr Neil Gudgeon from Manchester. Miss Melissa King from Manchester. Mrs Beverley Roscoe from Leigh.

Manchester Academy

Liz Clarke & Ivan GRxL Carol Street from Sidford. Jane Paul from Skelmersdale * Lisa Hunt from Stratford-upon-Avon.

Ian Howarth & Hodge L Philip Whitehead from Leigh * Gail Winnett from Birmingham. Miss Katherine Gunn from Leamington Spa. Ms Wendy Jackson from Leigh.

Andrew Johnson & Pearl LxGR Bruce Humpston Lacy from Birmingham * Caroline Clifton from Stratford-upon-Avon. Mrs Barbara Stone from Kenilworth. Mrs Lindsay Halliwell from Manchester.

Buddug Lloyd Jones & Ivory GRxL Julie Boobyer from Wirral. Debbie Dryden from Liverpool * Paul Bissell from Cirencester. Mrs Ruth Edge from Worcester. Mrs Donna Roberts from Wigan.

Kerry Parkes & Denny GRxL Robin Buswell from Boston * Claire Stanley from Evesham. Mr Terry Pemberton from Leigh.

Anthony Tyrer & Bramble GRxL Norma & Derek Stent from Bath * Sarah Butler from Milton Keynes. Mrs Maria Spence from Southam.

Newcastle

Carolyn Brown & Foxy L Julie Ball from Tadcaster * Amanda Bourne from Nuneaton. Dr Lizzie Ruddy from Newcastle upon Tyne. Ms Tracy Frank from Stockton-on-Tees.

Claire Bunting & Pippa L Nicky Benson from York * Carol Rider from

York. Elizabeth McGuire from Brough. Rachel Bagley from Coventry. Mrs Elizabeth Holding from Tewkesbury. Mrs Jane Pattinson from Cramlington.

Shirley Carney & Chandler GRxL Anita Mortimer from Pontefract * Marie Lee-Hopps from Redditch. Mrs Sally Sleath from Warwick. Miss Jakki Roger from Forfar.

Sue Harding & Nellie L Gavin Eastman from Barrow upon Humber * Rachel Atkinson from Coventry. Mr Alan Lowe from Coventry. Mrs Jennifer Lovegrove from Forfar.

Paige Lillywhite-Little & Eaton L Christine McRae from Otley * Anne Baulch from Daventry. Mrs Kate Price from Warwick. Mr Patrick Nolan from Newcastle upon Tyne.

Hilary Myers & Velma GRxL * Jayne Marjorie Lawson from Stratford-upon-Avon. Mrs Ruth Edge from Worcester. Mrs Nicola Vernon from Whitley Bay.

Louise Okello & Broxup LxGR Margaret Clayton from Doncaster. Wendy Raisbeck from Saltburn-by-the-Sea * Stephen Richardson from Warwick. Mrs Tertia Latham-Marr from Redditch. Miss Hollie Bland from Newcastle upon Tyne.



Louise Thompson & Bubbles LxGR Margaret Reid from Stockton-on-Tees * Patricia Hicks from Sutton Coldfield. Mrs Karen Samples from Newcastle upon Tyne.

Lois Turner & Vegas GRxL Karen Macallister from Falkirk * Jayne Marjorie Lawson from Stratford-upon-Avon. Mrs Ruth Edge from Worcester. Mrs Christine Jones from Forfar.

Susan Wood & Ann L Jeni Widdows from York. Joanne Hewitt from Shildon * Jean Midson from Daventry. Mr Ian Crewe from Nuneaton. Mrs Rachel Ryder from Newcastle upon Tyne. Mrs Vera Marriott from Newcastle upon Tyne.

Nicola Wright & Isobel GRxL Elaine Jack from Musselburgh. Jennifer Jones from Rosewell * Lisa Hunt from Stratford-upon-Avon. Miss Alison Myles from Forfar. Miss Sue Robinson from Stockton-on-Tees.

Newcastle Academy

Lisa Halley & Elizah LxGR Julie Miller from Leeds. Elizabeth McGuire from Brough * Carla Tucker from Rugby. Mrs Dulcie Parry from Rugby. Mrs Donna Slassor from Newcastle upon Tyne. Miss Fiona Nicholson from North Shields.

Nottingham

Imogen Brown & Margaret L Anne Herrod from Bleasby * Sue Padget from Kettering. Mrs Tricia Collier from Warwick. Craig Hulatt from Nottingham.

Peterborough

David Bruce & Brian LxGR Chris Postill from Cambridge * Sarah King from Solihull. Mrs Charlotte Lockyer from Warwick. Mr Anthony Miles from Kettering.

Angela Bull & Meadow GRxGSD Anita Kaur from Birmingham * Clare Pinks from Rugby. Mr Richard Edge from Flyford Flavell. Miss Claire Huxley from Leamington Spa.

Clare Burman & Carla LxGR Caroline Kunkel from Cambridge * Mrs Geraldine Barrott from Leamington Spa.

Anne Carpenter & Morton L Lisa Howlin from Worksop. Kevin John Ruane from Chesterfield * Mrs Julia Tivey from Rugby.

Alison Dixon & Bessie L Anne El-Mageed from Rugby * Dr Jo Kandola from Leamington Spa. Mr Andrew Walling from Warwick.

Marie Sophie Fox & Edi LxGR Louise Gladwin from Lincoln * Denise Phelps from Bromsgrove. Miss Katherine Gunn from Leamington Spa. Mrs Caroline McCluskey from Warwick.

Sharon Jay & Susie LxGR Deborah Walton from Bicester * Sarah King from Solihull. Miss Leah McFadden from Southam.

Abbie-Rose Reddington & Dinah L Geoffrey Wharton from Buxton * Rachel Atkinson from Coventry. Mr Alan Lowe from Coventry. Mrs Catherine Thomson from Rugby.

Robert John Scotter & Sinbad GRxGSD Emma Pollard from Rugby * Sarah Lay from Solihull. Mrs Laura Gimes from Leamington Spa. Mrs Sonia Davidson from Peterborough.

Stephne Van Der Toorn & Lance LxGR Aly McLaughlin from Coventry * Victoria Alcock from Leamington Spa. Miss Gemma Pollock from Warwick.

Emma Wedge & Goldy L * Jane Warr-King from Lincoln * Gary Loosley from Stockton. Mrs Rebecca Francis from Warwick.

Riley Yeomans & Kaspar LxGR Dorothy Duggan from Evesham * Harriet Sandall from Stratford-upon-Avon. Mr Kieran Pell from Leamington Spa.

Reading

Janet Alder & Hetty GRxGR Karen Homans from Neath * Katie Harris from Redditch. Mr Joe Emberson from Reading.

Annette Hornsby-Jones & Trudi STPxL Diana Holmes from Tonbridge. Diana Clarke from Newbury * Leigh Court from Balsall Common. Miss Lucy Plummer from Reading.

Phil Jarvis & Pippin LxGR * Tracy Jones from Carterton. Miss Katherine Gunn from Leamington Spa. Mrs Elly Bayliss from Burghfield Common.

Anthony Lawton & Sky L Janet Tolputt from Bridport * Ann Buxton from Leicester. Mrs Gail Johnson from Warwick.

Reading Academy

Mary Elizabeth Furby & Clyde L Maureen Walker from Loughton * Anthea Smith from Evesham. Fernanda Isabel from London.

Stewart King & Lewis GRxL Emilie Matthews-Buckley from Wantage * Ally Stokes from Newton Regis. Mrs Sally Sleath from Warwick. Dr Steven West from Newbury.

Graham Williams & Bernie LxGR Linda Masher from Sidcup * Sue Davy from Oldbury. Miss Katherine Gunn from Leamington Spa. Miss Alison Fuller from London.

Redbridge

Annette Bodsworth & Winnie L Barbara McConochie from Bristol * Charlotte Knox-Wright from Hook. Mr & Mrs John & Anne Starr from Wigan.

Diane Disbury & Dave GR Richard Levy from Newbury * Elizabeth Tookey from Warwick.

David Grimwood & Violet L Jane Bright from Benfleet * Helen Hinchliffe from Derby. Mrs Clare Iles from Stratford-upon-Avon. Mrs Bettina Jacobs from Borehamwood.

Leigh Hutchings & Konrad L Beverly Denney from Colchester * Marie Lee-Hopps from Redditch. Mr Hugh Brown from Coventry. Mr Neil Hutton from Ipswich. Ms Emma Finnigan from Woodford Green.

Yvonne Kelly & Zorin GRxL * Katrina Hirons from Bromsgrove. Ms Esther Holmes from Meriden. Mr Barry Jessop from London.

Sarah Marshall & Greg GRxL Barbara Cullen from Sandbach * Marie Lee-Hopps from Redditch. Mrs Sally Sleath from Warwick. Mrs Jennifer Hulme from Bolton.

Gary Mazin & Chip L Brian Ayers from Woking * Claire Cobbold from Leamington Spa. Mr Martin Fahey from London. Miss Rebecca Knight from Epping.

Janet Merry & Marcel LxGR Julie Chase from Ipswich * Victoria Alcock from Leamington Spa. Mr Nigel Morton from London.

Kaylie Newbury & Ellie LxGR Camilla Craze from Tunbridge Wells * Tracy Jones from Carterton. Miss Katherine Gunn from Leamington Spa. Mr Ian Standing from South Woodford. Miss Nishta Pandit from Ilford.

David Smith & Milo LxGR Jan Flower from Upminster * Janet Leggett from Upper Longdon. Miss Rachel Ashley from Nuneaton. Dr Caroline McGlynn from Ilford. Miss Melissa Jenkinson from London.

Monica Smith & Gill GSDxGR Karen Meeson from St Leonards-on-Sea

* Sarah Jones from Rugby. Mr Graham Hodson from Redditch. Miss Ella Gable from London. Mrs Janie Bird from Woodford Green.

Aleksandr Tamasauskas & Ralphie LxGR Jacqueline Locke from Maidstone * Michelle Buckley from Leamington Spa. Miss Katherine Gunn from Leamington Spa.

Claire Wallace & Daisy GR Jo Eyre from West Malling * Jackie Henderson from Moreton-in-Marsh. Mrs Lee Butler from Banbury. Mr Steven Holding from London.

Lucja Wyrwantowicz & Ulla GRxGSD Jo Kerr from Ilminster * Sharon Faulkner from Coventry. Mr Paul Black from Solihull. Mrs Chantal Gilbert from Radlett. Dr Helena King from Chelmsford.

Redbridge Academy

Nicola Beard & Buzz LxGR Lisa Clark from Wallingford * Sue Davy from Oldbury. Miss Katherine Gunn from Leamington Spa. Mr John Wraight from Romford.

Craig Scott & Wilf LxGR James Dickason from Braintree * Tracy Inman from Coventry. Mrs Lisa Batashvili from Epping.

Sheffield

Casey Lawrence & Chipper LxGR Andi Miller from Peterlee * Mrs Rachel Morin from Sheffield. Miss Lindsey Sharp from Beverley.

Lisa Rankin & Harmony GSD from Yarm Louise Dye from Leeds * Edward Condry from Daventry. Miss Laura Davies from Sheffield.

Sheffield Academy

Nikki Beardall & Fred LxGSD Carole Smith from Keighley * Sharon Faulkner from Coventry. Mrs Tertia Latham-Marr from Redditch. Mrs Rachel Ducker from Sheffield.

Shrewsbury

Ellen Anderson & Poppy LxGR Linda Jordan from Oswestry * Shirley Thomas from Daventry. Mrs Samantha Slack from Shrewsbury.

Craig Bates & Murphy LxGR Chris Bowers from Wirral * John Hamilton from Solihull. Miss Katherine Gunn from Leamington Spa. Mrs Nicola Phelan from Manchester.

Janet Bennett & Riche GRxL Siobhan Banner from Dudley * Jane Franklyn from Daventry. Mrs Sally

Sleath from Warwick. Mrs Anna Fletcher from Shrewsbury.

Brian Bermingham & Reg GRxL Robert Tanner from Ludlow * Marie Lee-Hopps from Redditch. Mrs Sally Sleath from Warwick. Miss Georgia Bennett from Telford.

Mark Harrison & Edward L Sara-Jane Air from Altrincham * Anne Baulch from Daventry. Mrs Kate Price from Warwick. Mr Gareth Cone from Shrewsbury.

Evelyn-Jill Jones & Wendy GRxL * Ellen Dicken from Kenilworth. Mrs Louise Neill from Alcester. Mrs Emma Trevor-Jones from Shrewsbury.

Andrew Kinsella & Mary LxGR Stephanie Tsang from Wigan * Patricia Hicks from Sutton Coldfield. Miss Charlotte Houghton-le-Chapple from Shrewsbury. Miss Holly Blakemore from Shrewsbury.

Karen Lamond & Fennel L Joanna Hughes from Shrewsbury * Claire Davis from Warwick. Miss Jessica Lowe from Birmingham. Mrs Tracy Booth from Shrewsbury.

Joy Majekodunmi & Violet LxGR * Michelle Buckley from Leamington Spa.

Miss Katherine Gunn from Leamington Spa. Mrs Penny Norris from Shrewsbury.

Susan Middleton & Lester STPxL Wayne Barnes from Bolton * Irene Scott from Warwick.

Alice Millward & Rosie GRxGSD Christopher Wilson-Barradell from Kingswinford * Trudy Evans from Coventry. Mrs Louise Millard from Lutterworth. Ms Aleksandra Zydek from Shrewsbury.

Lorna Nutley & Barbie L William Gurney from Stourbridge * Shasheill Kumar from Coventry. Mr John (Peter) Penny from Shrewsbury. Mr William Gurney from Stourbridge.

Sam Proctor & Reef LxGR Christine Jones from Over Hulton * Jane Huntington from Stratford-upon-Avon. Mr Doug Harrower from Bedworth. Mr Jon Griffin from Telford.

Jordan Quinn & Ocean LxGR Kevin Barker from Stoke-on-Trent * Jane Huntington from Stratford-upon-Avon. Mr Doug Harrower from Bedworth. Mrs Sharon Southall from Shrewsbury.

Stacey Sanderson & Claire LxGR Hayley James from Dudley * Jean Dyson from Stourbridge.



Miss Katherine Gunn from Leamington Spa. Mrs Sian McGrory from Shrewsbury. Mrs Beth Baker from Shrewsbury. Mrs Sheena Anderson from Shrewsbury.

Wayne Thompson & Marco GRxL Sheena Key from Stone * Diane Merker from Malvern. Mrs Sally Sleath from Warwick.

Simon Walker & Erica L Susan Nicholas from Telford * Anne Baulch from Daventry. Mrs Kate Price from Warwick. Mr Bruce Bethune from Shrewsbury. Miss Bethan Knowles from Telford.

Shrewsbury Academy

Alison Burns & Honey Bunch LxGR Catriona Macaulay from Dumbarton * Sandra Bradburn-Vazquez from Lichfield. Dr Jo Kandola from Leamington Spa. Mr Fraser Stewart from Forfar.

Sharon Stockman & Clover GSD Grant Little from Glasgow * Sharon Pogson from Pinvin. Mrs Susan Irvine from Forfar. Mr Paul Slogrove from Shrewsbury.

Southampton

Tracey Bentley & Tato L Vicky Heath from Kingsbridge * Sharon Green from Burton upon Trent. Mrs Louise Atkinson from Southampton.

Jemma Brown & Mary STPxL Rwth Sloan from Cheadle * Leigh Court from Balsall Common. Mrs Donna Roberts from Wigan. Ms Alison Banks from Carlisle.

Paul David Fenner & Bobbi GRxL Janet Johnson Chang from Redditch * Diane Walinski from Coalville. Mrs Sally Sleath from Warwick. Ms Tara Suntoke from Kenilworth. Mrs Chantell Simpson from Eastleigh.

Angela Flake & Autumn GSD Susan Taylor from Thurstaston * Edward Condry from Daventry. Miss Sarah Weyer from Bolton. Mr Philip Williams from Wimborne.

Ian Jones & Diddy LxL Sally Williams from Farhill * Sam Moyes from Southam. Mr Doug Harrower from Bedworth. Mrs Julie Charlton from Southampton.

Albert Jordaan & Mason LxGR Chris Fraser from Ringwood * Jean Dyson from Stourbridge. Miss Katherine Gunn from Leamington Spa.

Michael McCarthy & Archie LxGR Patrick Hartery from Barry * Janet Leggett from Upper Longdon. Miss Rachel Ashley from Nuneaton. Mr Mark Gregory from Eastleigh.

Teresa-Lucia Sutton-Becker & Pixel LxGR Jo Gurteen from Haverhill. Nigel Garnham from Kirstead * Shalini Bristow from Worcester. Mrs Catherine Kelso from Alcester. Mrs Gemma Pope from Henley-in-Arden.

Susan Wright & Bonnie L Stephanie Johnson from Godmanchester * Anthea Smith from Evesham. Mr Andrew Rowe from Warwick.

West Scotland

Margaret Barclay & Imrie GRxL Anita Melrose from Bankfoot * Lisa Hunt from Stratford-upon-Avon. Mr Patrick Willis from Arbroath.

Martin Callaghan & Lewis LxGR Paul Cave from Airdrie * John Hamilton from Solihull. Miss Katherine Gunn from Leamington Spa. Mrs Kelly Clark from Glasgow.

Jamie Cramb & Henry L Joyce Wallace from Glenrothes * Lisa Castle from Redditch. Mrs Jane Hargrave from Daventry.

Catherine Gilliland & Shenna GRxL Lyn Pinkney from Richmond * Lisa Hunt from Stratford-upon-Avon. Ms Elizabeth Hughes from Carnoustie.

Shiobhan Knox & Josi L Wendy Bellingham from Prestwick. Barbara Birrell from Glasgow * Amanda Bourne from Nuneaton. Miss Clare Carroll from Motherwell. Mrs Sarah Cowan from Lockerbie. Mrs Violet Murray from Motherwell.

Linda Laing & Angus GRxL Valerie Gray from Stonehaven * Jane Franklyn from Daventry. Mrs Sally Sleath from Warwick. Mrs Amanda Hamilton from Coatbridge.

James Macdougall & Carlie LxGR Catherine Craig from Newtownabbey * Caroline Windrum from Southam. Dr Jo Kandola from Leamington Spa.

Miss Lesley McMahon from Forfar.

Sharon Moncrieff & Ceejay LxGR Sheelagh Kennerley from Falkirk * Sandra Cox from Marlow. Dr Jo Kandola from Leamington Spa. Mr George Currie from Glasgow. Miss Emma Twigley from Larkhall.

Allan Russell & Jayson GRxL Ian Nicholson from Bradford * Helen Jennings from York. Margaret Langford from Warwick. Ms Kirsty Mullen from Hamilton.

Steven Scott & Koko L

West Scotland Academy

Dorothy Templeton & Gina L Lyn McLaren from Perth * Clare Strudwick from Leamington Spa. Mrs Barbara Stone from Kenilworth. Miss Emma Kennedy from Hamilton.



Jim's guide dog journey

After my guide dog Yannick, a huge German Shepherd and the canniest beastie, died in December aged eight, I wondered if any other guide dog owners have had the same varied journey as me.

Over my 35 years as a guide dog owner, I've trained at four different centres and with five instructors. There was Vann at Middlesbrough with Mark, Nickle at Forfar with Lorraine, Ingram at Forfar with Dusty, Zeb at Dundee with Eilidh, and Yannick was with Jen at Kilbride.

Yannick was my fifth dog and my first German Shepherd. I know we shouldn't compare, but he was a brilliant worker, so alert and attentive. Even though it's been six months already since I lost him, it will always hurt.

Jim Gales MBE



Caption competition

It was all clearly proving a bit much for Bert, the nearly three-year-old Labrador guide dog belonging to Gordon Bowdery. Bert is Gordon's first guide dog, and Gordon said: "Bert has really changed my life for the better and every day he gives me something to smile about."



What would you caption this photo? Send your suggestions to: **Forward, Communications Team, Guide Dogs, Hillfields, Burghfield Common, Reading, RG7 3YG** or email forward@guidedogs.org.uk with your name, address and a daytime phone number. The winner gets a £10 Marks and Spencer voucher.

Competition rules: This competition is open to anyone resident in the UK, except employees of the Guide Dogs for the Blind Association, their families and anyone connected with the competition. No purchase necessary. Proof of posting cannot be accepted as proof of delivery. No responsibility can be accepted for entries delayed, damaged or mislaid or wrongly delivered. Illegible entries will be disqualified. Only one original entry is allowed per envelope. The winners will be notified by either post or telephone and the results will be published in the next issue of the magazine. The winners must agree to the publication of their names, photographs and any publicity, if requested. In all matters concerning the competition the Editor's decision is final. No correspondence can be entered into. Entry implies acceptance of the rules. The closing date for the competition is **31 July 2026**.

The last competition winner is **Michael Hassell** from **Leeds**, with the caption below. **Congratulations, Michael!**



"When I said we should hang out together..."

Postcode Lottery's new partnership with Strava is off and running (or cycling, or walking, or swimming...!)

Guide Dogs is proud to be one of five charities selected for a new national campaign this summer called Crowns for Causes, organised by Postcode Lottery and the motivational fitness tracking app, Strava.

Postcode Lottery has created their own Strava Crowns - digital awards given to people who use the app to log and complete specific physical challenges. The challenges are open to all fitness levels and any activity counts - from walking the dog to scaling a mountain!

Strava users simply complete one of the monthly challenges and nominate Guide Dogs as their chosen charity within the app, unlocking a £50 donation from Postcode Lottery that will help change the lives of people with sight loss.

There's a new challenge for each calendar month of June, July and August 2026, with multiple opportunities for app users - whether longstanding or new - to get involved and make a difference.

And if a target of 30,000 Strava app users taking part is reached in each month, participants can then vote for Guide Dogs to receive an amazing £100,000 funding boost.

One person taking part in Crowns for Causes is guide dog owner Sam, who was excluded from school PE classes because of her vision impairment. But she continued to pursue sports despite being told she couldn't, and is now a full-time athlete, content creator and advocate for people with sight loss.

Sam said: "I'm captain of the England Blind Women's football team, and I'm a rower -



I've rowed on the GB Para Pathway for Great Britain. I think of [my guide dog] Helga as an athlete too, because she's there for all my training sessions!

"Before Helga, I was guided everywhere I went. I felt like a bird trapped in a cage, unable to break free.

"It's so freeing to leave the house on my own terms now. I've gained a whole new sense of independence, and I don't have to rely on others to get around."

Strava is available on Apple's App Store or from Google Play.


**Crowns
for Causes**



Calling all Petplan insured pets from the last 50 years!

We are proud to have helped millions of pets get the vet care they need during our 50 year history.

To celebrate this incredible milestone, we are em-bark-ing on a Guinness World Records® attempt and need your help!

If you have had a pet insured with Petplan during the last 50 years, upload their picture to help us create the world's largest online gallery of animals.



OFFICIAL ATTEMPT



Scan the code to upload a picture

